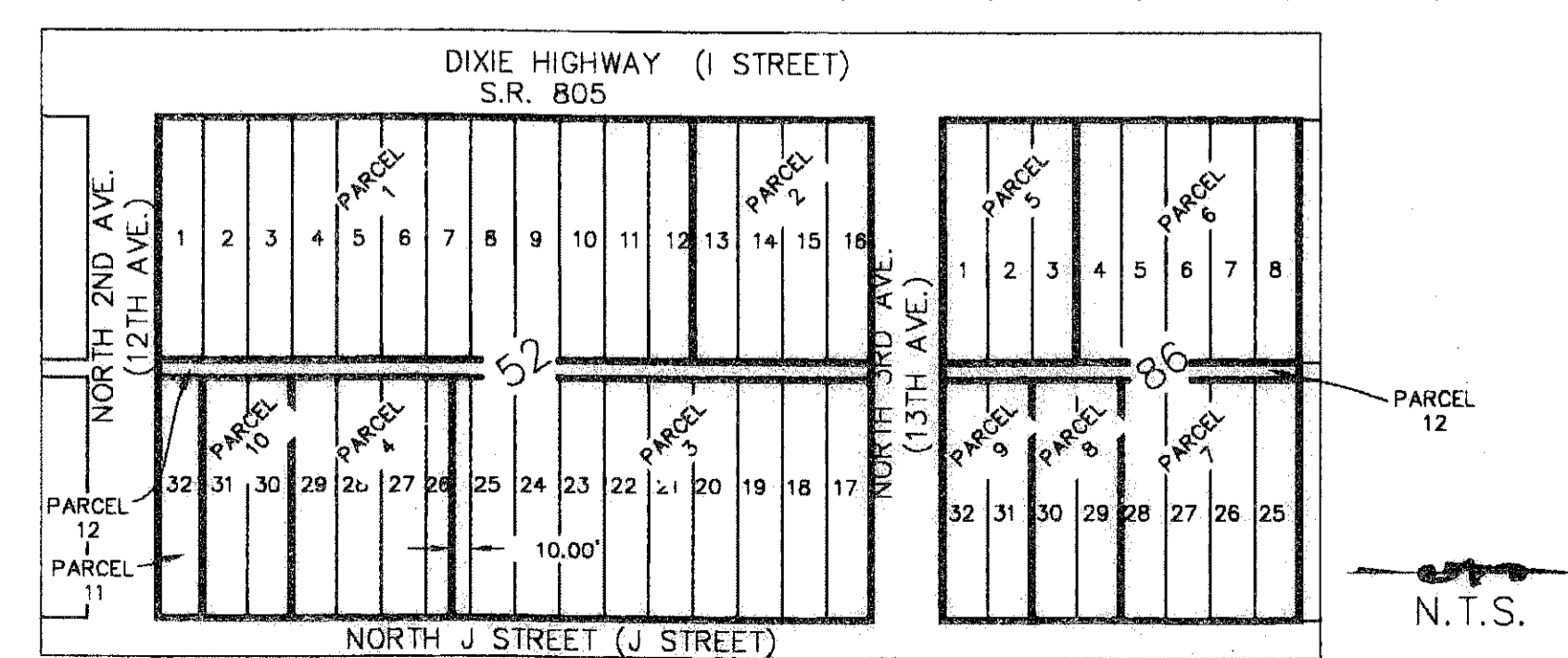
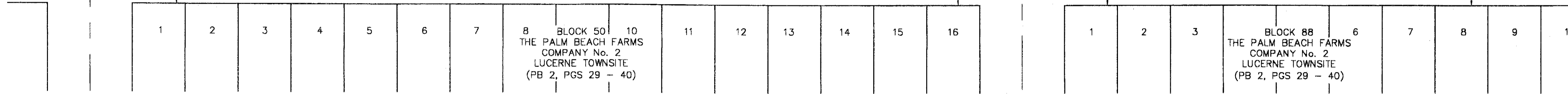
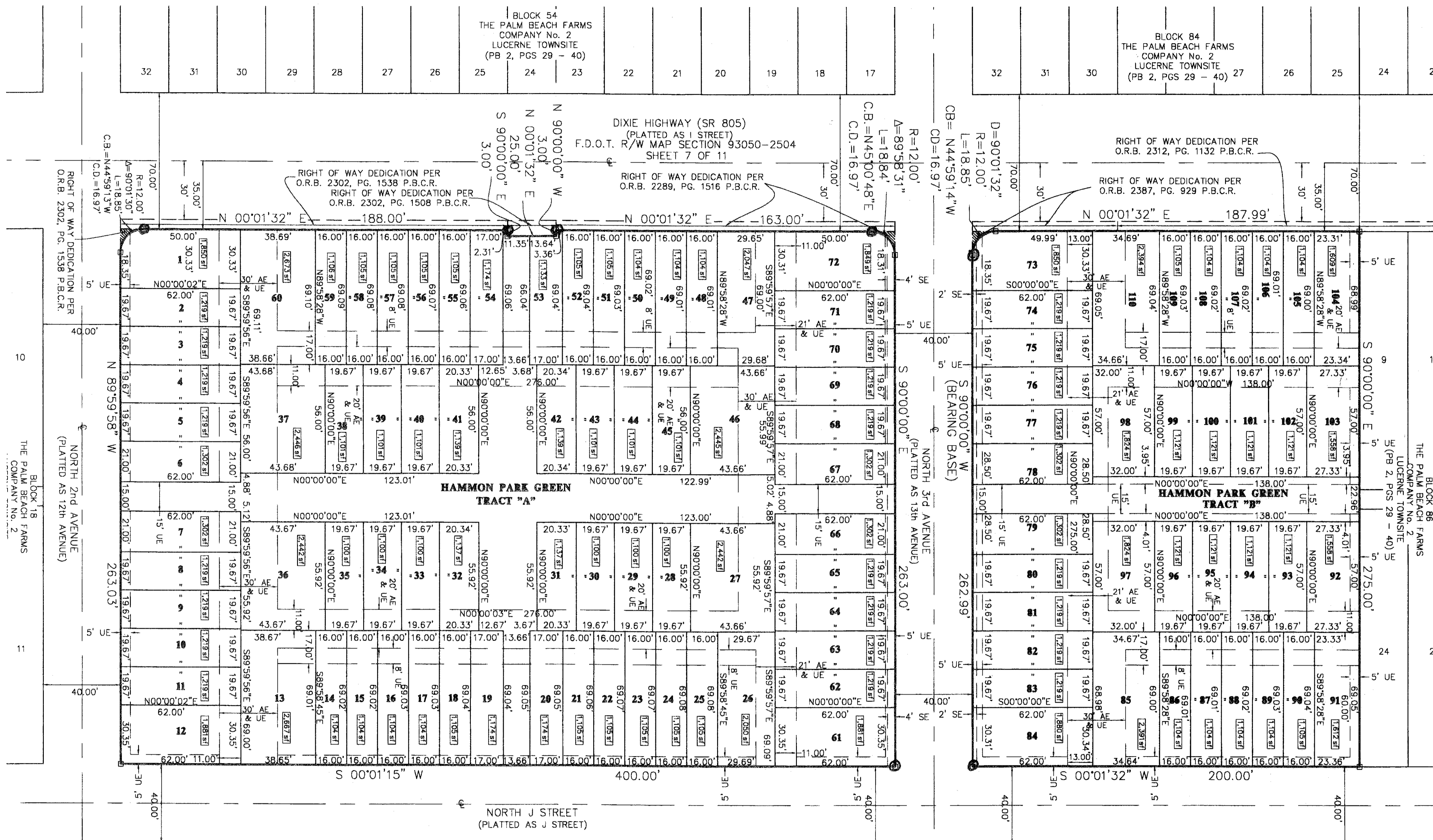
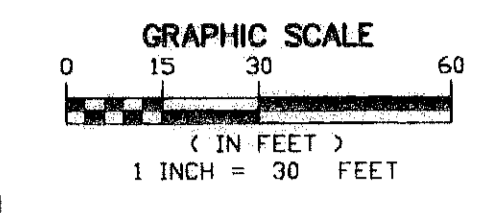


# HAMMON PARK

BEING A REPLAT OF A PORTION OF BLOCKS 52 AND 86 OF THE PALM BEACH FARMS COMPANY PLAT No. 2, TOWNSITE OF LUCERNE, AS RECORDED IN PLAT BOOK 2, PAGES 29 THROUGH 40, INCLUSIVE, SECTION 21, TOWNSHIP 44 SOUTH, RANGE 43 EAST, CITY OF LAKE WORTH, PALM BEACH COUNTY, FLORIDA.

DECEMBER 2006

SHEET 2 OF 2



LEGAL DESCRIPTION PARCEL IDENTIFICATION MAP  
PALM BEACH FARMS COMPANY PLAT NO. 2, TOWNSITE OF LUCERNE

- LEGEND**
- PB = PLAT BOOK
  - PG(S) = PAGE(S)
  - = SET PERMANENT REFERENCE MONUMENT LB 6680 (UNLESS OTHERWISE NOTED)
  - SE = SIDEWALK EASEMENT
  - AE & UE = ACCESS EASEMENT & UTILITY EASEMENT
  - UE = UTILITY EASEMENT
  - Ⓢ SET NAIL & DISK L.B. 6680